

INDOFINE Chemical Company, Inc.

121 Stryker Lane, Bldg. 30, Suite 1 • Hillsborough, NJ 08844 • U.S.A.

Phone: (908) 359-6778 • FAX: (908) 359-1179

website: www.indofinechemical.com

e-mail: chemical@indofinechemical.com

CERTIFICATE OF ANALYSIS

Catalog Number: 06-1867

Product Name: **VICINE**

CAS Number: [152-93-2]

Lot Number: 2203651

Chemical Formula: C₁₀H₁₆N₄O₇

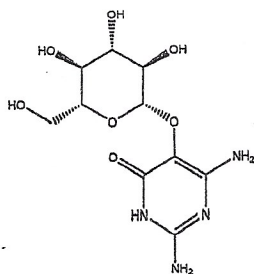
Molecular Weight: 304.26

Appearance: Off-white powder

Loss on drying: 0.9%

Storage: Store at 0-8°C

Purity(HPLC): 99.9%



Prepared by:
Ramesh Mandadi
Ramesh Mandadi
Director of Operations

Reviewed and Approved by:
Sujata Moton
Sujata Moton
VP

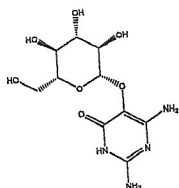
ICG **INDOFINE Chemical Company, Inc.**

121 Stryker Lane, Bldg. 30, Suite 1 • Hillsborough, NJ 08844 • U.S.A.

Phone: (908) 359-6778 • FAX: (908) 359-1179

website: www.indofinechemical.com

e-mail: chemical@indofinechemical.com



HPLC ANALYSIS

Catalog No.: 06-1867

Product Name: Vicine

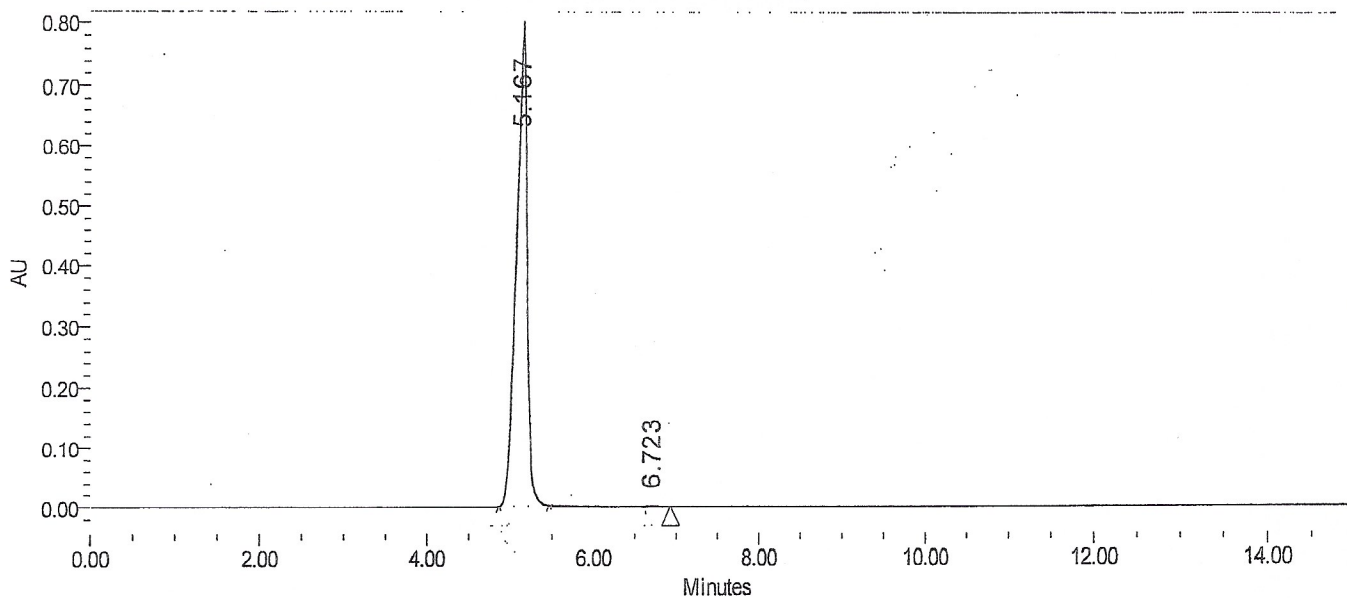
Lot No.: 2203652

SAMPLE INFORMATION

Sample Name: Vicine
Sample Type: Unknown
Vial: 49
Injection #: 1
Injection Volume: 5.00 ul
Run Time: 15.0 Minutes

Acquired By:
Sample Set Name
Acq. Method Set: Vicine
Processing Method: sample
Channel Name: PDA Ch1 275nm@4.8nm
Proc. Chnl. Descr.: PDA Ch1 275nm@4.8nm

Auto-Scaled Chromatogram



Peak Results

	Name	RT	Area	% Area	Height (μV)	USP Plate Count	USP Resolution
1		5.167	7197576	99.90	776971	6578.04	
2		6.723	6965	0.10	949	9873.86	6.28

Prepared by:

Ramesh Mandadi

Ramesh Mandadi

Director of Operations

Reviewed and Approved by:

Sujata Moton

Sujata Moton

VP